



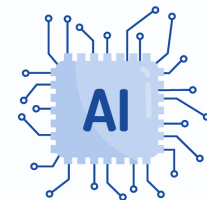
**Inter University Centre for Teacher Education**  
**BHU, Varanasi**

**Six-day Professional Development Program**  
**On**  
**Training of Trainers: Integration of**  
**AI in Teaching-Learning**  
**and Research**

**03-08 March, 2025** Offline Mode

**Last Date of Registration: 23 February, 2025**

**Registration Link: <https://iucte.ac.in/program/>**



## About IUCTE

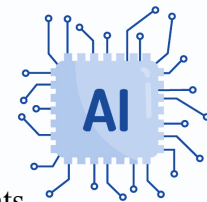
The Inter University Centre for Teacher Education (IUCTE), BHU, Varanasi is an Autonomous Institution established by the University Grants Commission (UGC) under section 12 (ccc). Its core mission is to promote excellence in Teacher Education through intervention in Curriculum, Pedagogy, Assessment, Governance, Policy, Planning and Research. IUCTE envisions cultivating quality educators who contribute to a sustainable ecosystem, thus reshaping the Education System in India. IUCTE plays a pivotal role in enhancing the Quality of Teaching and Research, Technology Integration in Education, Advisory Services, National & Global Collaborations, and Influencing the Policy Changes to advance the field of education in general and Teacher Education in particular.

## Introduction

In today's rapidly evolving digital age, technology is revolutionizing the landscape of education globally, and artificial intelligence (AI) is at the forefront of this transformation. The growing presence of AI in the education sector is redefining how knowledge is imparted, how students learn, and how their progress is evaluated. Recognizing the pressing need to equip educators with the knowledge and skills to harness AI's potential, the Inter University Centre for Teacher Education (IUCTE) is organizing a Six-day Professional Development Program (PDP) on the Integration of AI in Teaching-Learning & Research, specifically designed for higher education educators. Set to take place from **March 03, 2025 to March 08, 2025**. By immersing participants in practical, real-world applications of AI, this PDP aims to empower educators to enhance their professional practices with AI, creating more effective and engaging learning environments.

Artificial intelligence, once a distant concept, is now integral to many aspects of our lives, from smart assistants on our phones to predictive analytics in various industries. In education, AI offers unique tools and techniques that can assist educators in customizing and enhancing student learning experiences. It provides capabilities to personalize lessons, automate administrative tasks, track student progress, and even predict learning outcomes based on data analytics. For educators in India, the significance of this transition is underscored by the **National Education Policy (NEP) 2020**, a landmark document that envisions an educational system that integrates technology seamlessly into classrooms and administrative processes. In particular, the NEP's Chapter 23 and Chapter 24 underscore the importance of adopting technology and AI to meet the demands of the 21st-century classroom.

The NEP 2020 marks a watershed moment in Indian education, setting out a vision for transforming the educational sector by making it more inclusive, flexible, and in tune with modern technological advancements. Chapter 23 of the NEP 2020 emphasizes the need for educators to integrate technology into their teaching methodologies. Specifically, points three and five highlight the importance of AI and emerging technologies as critical tools for enhancing the quality of education. NEP 2020 advocates for the development of digital resources that allow students to engage with subjects in innovative ways and encourages teachers to adopt these tools to create enriched learning environments.



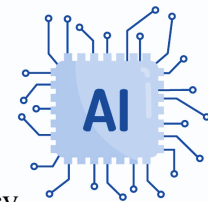
Chapter 24 of the NEP 2020 elaborates on the role of technology in the realm of assessments and research. It advocates for the use of technology to create robust assessment systems that are more inclusive and adaptive to individual student needs. AI-driven assessments, for example, can adapt questions based on a student's performance, providing a more personalized learning experience. Furthermore, technology in research can facilitate new methodologies, enabling educators to analyze large datasets, conduct interdisciplinary research, and make data-informed decisions that drive educational quality. This PDP aligns with the NEP's vision by aiming to enhance the professional development of educators, providing them with the knowledge and skills required to integrate AI meaningfully into their practices.

The PDP on AI integration has been meticulously designed to help higher education professionals bridge the gap between traditional teaching practices and AI-driven methodologies. Through hands-on training, participants will gain proficiency in various AI tools and techniques, empowering them to create more dynamic and interactive learning experiences. This program emphasizes practical learning, ensuring that participants can directly apply their new skills in real-world teaching, assessment, and research scenarios. By exploring AI's role in facilitating personalized learning, educators can address individual student needs more effectively, making learning more inclusive and adaptive.

For educators, the impact of AI extends far beyond the classroom. In the realm of research, AI opens new avenues for data collection and analysis, enabling researchers to explore complex educational phenomena with unprecedented depth. AI-driven data analysis can reveal patterns in student behaviour, learning outcomes, and educational trends, providing insights that can inform educational policy and practice. Educators participating in this PDP will learn how to use AI to streamline their research processes, making data collection, analysis, and interpretation more efficient and effective. This capability will not only enhance their research output but also contribute to a deeper understanding of how students learn and how educational interventions can be optimized.

The program is designed to cater to educators with varying levels of technological proficiency, ensuring that all participants, regardless of their prior experience with AI, can benefit from the training. The curriculum will cover foundational concepts, such as understanding what AI is and how it functions, before progressing to more advanced topics like machine learning, natural language processing, and AI in educational research. This structure enables participants to build a strong foundation before diving into the specific applications of AI in teaching and assessment. By the end of the program, participants will have developed a portfolio of AI-based tools and strategies that they can implement in their classrooms and research projects.

This PDP also addresses the ethical dimensions of using AI in education. As AI becomes more prevalent, it is crucial to consider the ethical implications of its use, particularly concerning privacy, data security, and the potential for algorithmic bias. Educators will learn about responsible AI usage, focusing on how to safeguard student data and ensure that AI-driven systems are fair and unbiased. By promoting ethical AI practices, this program



aims to create an awareness among educators that goes beyond technical proficiency, encouraging them to adopt a mindful approach to AI integration in their work.

By the end of this six-day training, participants will not only possess new competencies but also become part of a community of practice dedicated to advancing India's educational landscape through innovative technologies. This professional network will allow educators to share best practices, discuss challenges, and collaborate on future projects, creating a sustainable model for continued professional development. The PDP thus not only equips educators with the skills needed to implement AI but also fosters a collaborative spirit that will drive the collective advancement of AI in education.

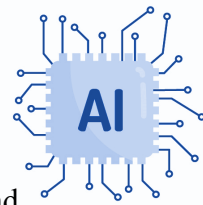
Last but not least, the Professional Development Program on AI in Teaching-Learning and Research represents a significant step toward realizing the educational vision set forth in the NEP 2020. As AI continues to reshape the global educational landscape, Indian educators must be prepared to harness this technology to meet the evolving needs of the 21st-century classroom. By participating in this program, educators will gain the knowledge, skills, and confidence to incorporate AI into their professional practices, contributing to the creation of a more innovative, inclusive, and effective educational ecosystem in India. This initiative reflects IUCTE's commitment to supporting educators in their journey toward technological empowerment, ultimately enhancing the quality of education for students nationwide. Through hands-on learning, ethical guidance, and community building, this PDP will empower educators to transform the teaching-learning process, setting a new benchmark for professional development in the digital age.

### **Why Should You Attend?**

Artificial Intelligence (AI) is rapidly becoming an invaluable tool in education, extending far beyond its technical origins. In modern classrooms, AI supports personalized learning, automates routine tasks, analyses student performance, and aids in research and content creation. This Professional Development Program is tailored to equip educators with a deep understanding of AI's applications across various educational domains, preparing them for the future of teaching and learning.

Through interactive, hands-on sessions, participants will engage directly with AI-driven tools, exploring their practical uses in real-world educational settings. The program's workshops and activities are designed to give educators an immersive experience, ensuring that they not only understand AI concepts but also gain practical skills they can immediately apply in their classrooms and research. Key learning outcomes include:

- Integrating AI in Lesson Planning and Teaching: Discover how to use AI to enhance lesson strategies, making them more engaging and effective.
- Enhancing Personalized Learning: Learn to employ AI tools that cater to individual learning needs, boosting student engagement and understanding.
- Streamlining Assessment and Feedback: Utilize AI-based analytics for efficient assessments, providing timely and insightful feedback to support student progress.



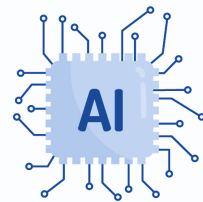
- Creating Interactive Content: Explore AI applications in developing dynamic and interactive educational content that captivates learners.
- Advancing Research and Data Analysis: Leverage AI for data collection and analysis, aiding in impactful educational research.

### **Objectives of the Professional Development Program**

- Equip educators with practical skills in AI tools and techniques to enhance teaching, learning, assessment, and research processes in higher education.
- Align educator training with the vision of NEP 2020, specifically focusing on integrating technology and AI to support 21st-century learning environments.
- Enable educators to create personalized and inclusive learning experiences by leveraging AI-driven solutions that address individual student needs and promote adaptive learning.
- Foster an understanding of ethical AI practices, emphasizing data privacy, security, and fairness to ensure responsible integration of AI in education.
- Build a collaborative professional network for sharing best practices, addressing challenges, and advancing the use of AI in India's educational sector.

### **Key Discussion Points and Hands-on of the Professional Development Program**

- Demystifying AI in Education – Foundations and Content Creation Possibilities
- AI for Personalized Learning – Adapting Content to Individual Needs
- Revolutionizing Assessment with AI – Adaptive and Interactive Content Creation
- Streamlining Research and Content with AI – Data Insights and Content Creation
- Ethical AI in Education – Content Creation with Privacy and Fairness
- Building the Future – Implementing AI-Enhanced Content in Education



## Program Delivery and Assignment Submission Guidelines

This program is designed to be conducted in offline mode. Below are the detailed instructions and guidelines for participants:

### 1. Access to Digital Resources:

All program-related digital resources, including reading materials, lecture recordings, presentations, and other learning aids, will be provided online too, through Google Classroom.

### 2. Assignments and Submissions:

- Participants are required to complete and submit assignments as part of the program requirements.
- Assignments will be made available in Google Classroom, along with detailed instructions and submission deadlines.
- Submissions must be completed online through Google Classroom. Physical or email-based submissions will not be accepted.

### 3. Real Classroom and Applied Assignments:

- Assignments must be designed and implemented in a real classroom setting, reflecting practical application of the concepts and techniques learned during the program.
- Participants are expected to provide evidence of classroom implementation, such as lesson plans, photos, videos, or other documentation, as part of their submission.

### 4. Doubt Clearance Session:

- After the conclusion of the program, again a dedicated online doubt-clearing session will be organized to address any queries or challenges faced by the participants during their practical implementation.
- This session aims to ensure that participants have a thorough understanding and are well-prepared to finalize their assignments.

### 5. Final Assignment Submission and Certification:

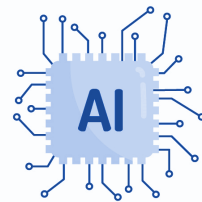
- Participants will have up to one week after the doubt-clearing session to complete and submit their final assignments online through Google Classroom.
- Certificates will only be awarded to participants who achieve 100% submission of all assignments.
- Assignments must meet at least a satisfactory standard for certification, as assessed by the program facilitators. Submissions that fail to meet the minimum requirements may not qualify for certification.

## Promotion Opportunities under CAS

Participants in this program will receive a certificate of completion after successful completion, which will be considered for promotion under the Career Advancement Scheme (CAS).

**Registration Fee: Free**





**Target Audience:** Educators from Higher Education Institutions

**Note:**

- Only **50 seats** are available; selection will be made on the basis of the **submitted writeup** with the Registration Form.
- Participants will be provided with shared accommodation and meals by IUCTE during the program. Kindly note that travel expenses (TA) will need to be borne by the participants themselves.

**Registration Link:** <https://iucte.ac.in/program/>

**Patron**

**Prof. Prem Narayan Singh**  
Director, IUCTE, BHU, Varanasi

**Convenor**

**Dr. Raja Pathak**  
Assistant Professor, IUCTE, BHU

**Advisory Committee**

**Chairman**

**Prof. Asheesh Srivastava, IUCTE, Varanasi**

**Member**

**Prof. K. Shrinivas, NIEPA, New Delhi**

**Member**

**Prof. J.V. Madhusudan, University of Hyderabad**

**Member**

**Prof. Gaurav Singh, NCERT, New Delhi**

**Member**

**Dr. Ajay Kumar Singh, IUCTE, BHU**

**CONTACT US**

**Program Convenor:** Dr. Raja Pathak, Assistant Professor (Mob. 9455037365)

**Technical Assistance for PDP login Portal:** Vikas Janu, Webmaster (Mob. 9785575456)

**Contact No. :** (0542)-2368823, E-mail: [program@iucte.ac.in](mailto:program@iucte.ac.in)

**Address:** Inter University Centre for Teacher Education (IUCTE), BHU

IUCTE Campus, Sundar Bagiya, Nariya-B.L.W Road, Varanasi - 221005